

Anti-GAPDH mIgG2a Antibody

Product Information

Product Name: Anti-GAPDH mIgG2a Antibody

Product Number: **GM-77904AB**

Storage temp. Store at 4°C short term. Store at -20°C long term (5 Years), avoiding freeze/thaw cycles.

Product Specification: GM-77904AB-10
GM-77904AB-100
GM-77904AB-1000

Antibody Information

Source/Isotype Monoclonal Mouse IgG2a

Species Reactivity Human, Mouse, Canine, Rat, Pig

Conjugate Unconjugated

Other Names G3PD, GAPD, GAPDH, OK/SW cl.12

Application Western blotting: 1:1000-1:5000; WB-Quality tested

Background GAPDH (Glyceraldehyde-3-phosphate dehydrogenase) is a catalytic enzyme commonly known to be involved in glycolysis. GAPDH exists as a tetramer of identical 37-kDa subunits and catalyzes the reversible reduction of 1,3-bisphosphoglycerate to glyceraldehyde 3-phosphophate in the presence of NADPH. One of the GAPDH moonlighting function is its role in adhesion and binding to other partners. GAPDH can itself activate transcription. GAPDH acts as a reversible metabolic switch under oxidative stress. GAPDH also appears to be involved in the vesicle transport from the endoplasmic reticulum (ER) to the Golgi apparatus which is part of shipping route for secreted proteins. Because the GAPDH gene is often stably and constitutively expressed at high levels in most tissues and cells, it is considered a housekeeping gene. For this reason, GAPDH is commonly used by biological researchers as a loading control for western blot and as a control for qPCR.

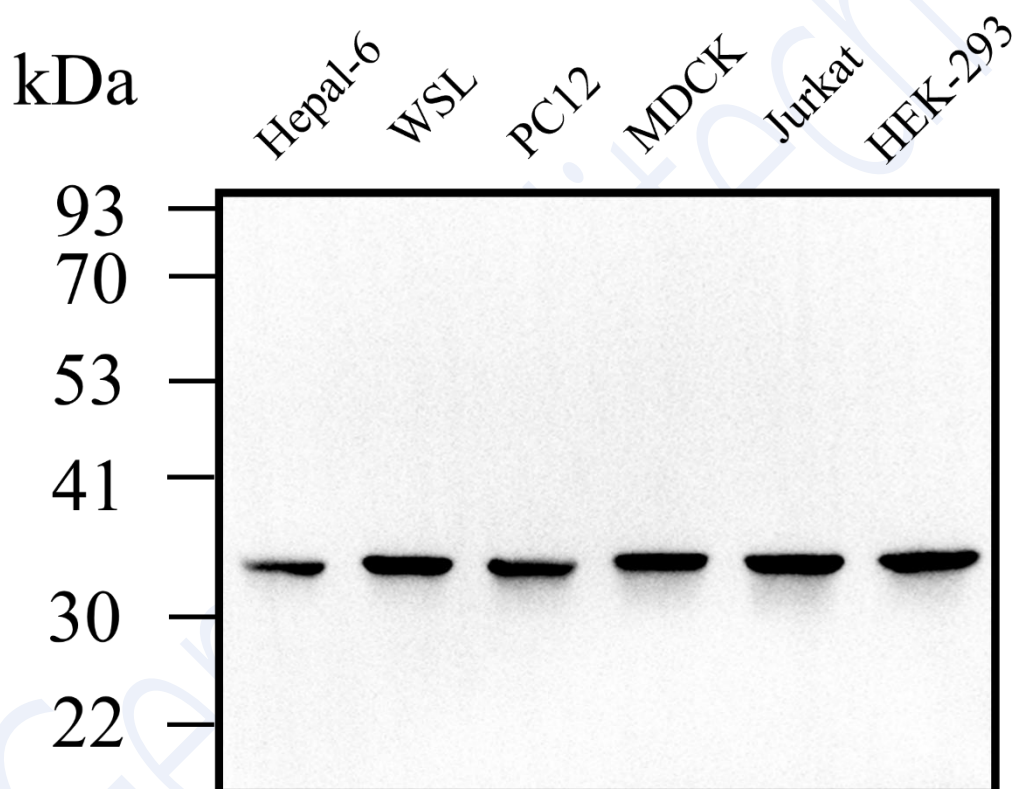
Formulation 20mM Histine, 50% glycerinum, 0.05% Bacteriostatic preservative, pH 6.0.

Version:2.1

Data Examples

Western Blotting

Western blot analysis was performed in HEK-293, Jurkat, PC12, WSL, Hepal-6 and MDCK cells. After sample loading, electrophoresis was performed at 120 V, followed by membrane transfer at 300 mA for 1.5h. After membrane transfer, the cells were blocked with 5% skim milk powder for two hours. Anti-GAPDH antibody (Catalog #77904AB) (1:1000 dilution) was used, incubated overnight at 4 ° C on a shaker, washed three times with 1×TBST before adding secondary antibody, incubated for 2-3 h at room temperature on a shaker, and washed three times with 1×TBST before visualization.



Version:2.1